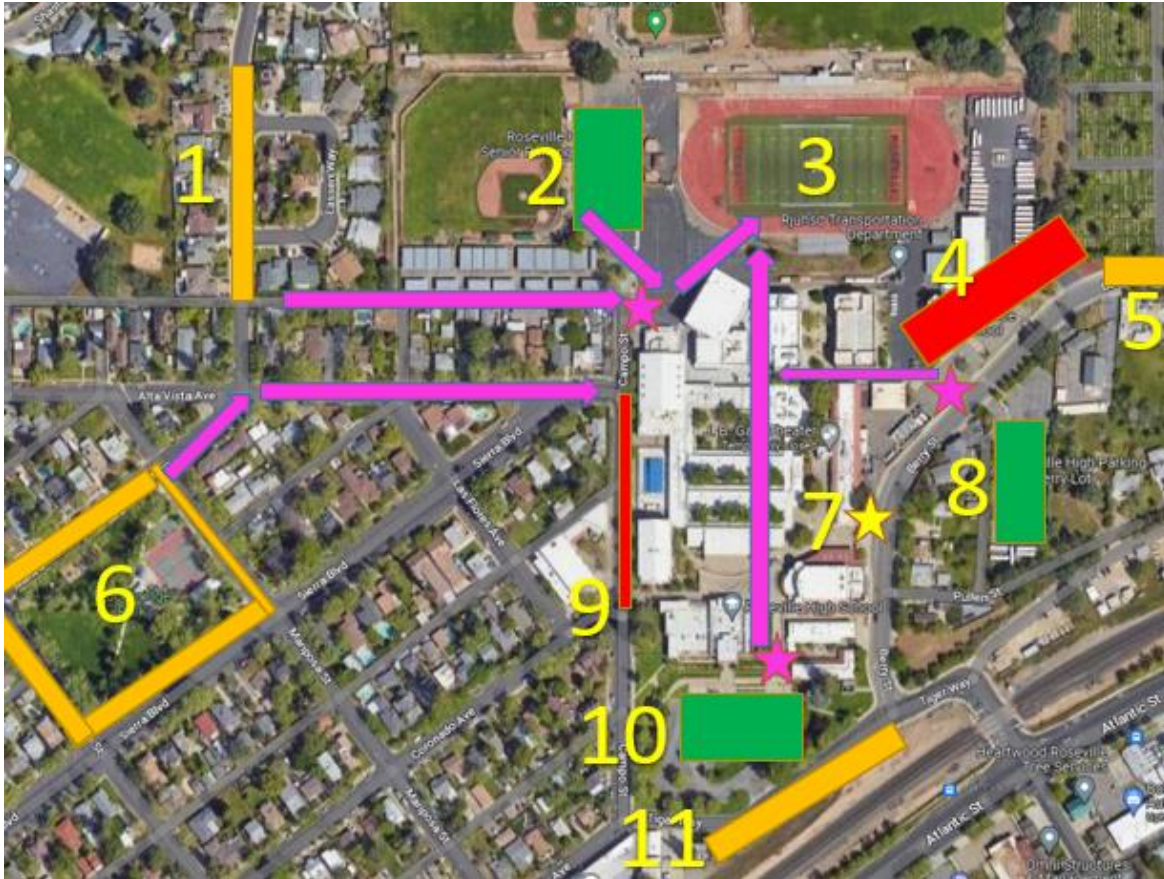


## PARKING AT ROSEVILLE HIGH SCHOOL



Parking at Roseville High School is one of our greatest challenges. This map and key is put out as a resource to help you when you are visiting. Most of the streets around RHS are signed for NO PARKING. School is in session until 3:20. Spectators must not enter the school grounds until school is dismissed. After 3:20, you may proceed through campus, directly to your point of the event. There will be open gates at the (2) "Senior Parking Lot," the (10) "Front Lot," and across from the (8) "Berry Lot." These entrances are marked with a purple star.

- Red = No zones; stay out of these areas
- Green = School parking lots
- Dark Yellow = areas in the neighborhood that is not signed for NO PARKING
- Purple = Foot travel to the stadium

### Numbered Locations

1. Neighborhood Parking- you can park on the streets in this area of the neighborhood and walk down the alley to the school.
2. Student Parking Lot – this lot is locked until 3:20. There are 160 parking spaces and most students will depart by 3:35.
3. The stadium
4. Transportation and Independence High School. No parking or vehicle traffic (it is signed). No foot traffic through the transportation yard (go to the gate just south of Independence High).
5. Parking along Berry Street, in front of the Roseville Cemetery; there is more room to park than pictured.
6. Parking along Woodbridge Park (415 Sierra Boulevard)
7. Bus loading (117 Berry Street); this is for bussed in athletes.
8. Berry Street Parking Lot (140 Berry Street)- Most students will depart by 3:25
9. Campo Street is CLOSED until 4. This section has gates at each end that does not allow for traffic.
10. Front Parking Lot (#1 Tiger Way)- you are welcome to park in this lot You won't be able to walk through campus until after 3:20. You can enter the main gate and walk all the way through campus to the stadium.
11. Dirt lot- Directly across from the front lot, you will find a dirt area where many students park.